

# The Conditional Impact of Local Economic Conditions on Incumbent Support

Martin Vinæs Larsen\*    Frederik Hjorth    Peter Thisted Dinesen  
Department of Political Science  
University of Copenhagen

Kim Mannemar Sønderskov  
Department of Political Science  
Aarhus University

March 23, 2017

PRESENTED AT THE INTERNATIONAL CONFERENCE OF EUROPEANISTS  
JULY 12-14, UNIVERSITY OF GLASGOW, UK

## Abstract

The state of the economy - one's own or that of the nation - has long been considered among the most important predictors of support for incumbent politicians. While a simple idea at heart, the specifics of retrospective voting remain debated. In this paper, we focus on what we believe to be an understudied economic influence: local housing markets. We propose that housing markets shape voting by providing locally derivable information about incumbent politicians' capacity to manage the economy, and test this proposition by examining the relationship between changes in the local housing market and support for the incumbent government in Denmark. Linking uniquely detailed and comprehensive data on housing sales at the local level to both precinct-level election returns and a two-wave panel survey, we find the hypothesized positive relationship between local housing prices and support for governing parties.

---

\*Corresponding author. [mvl@ifs.ku.dk](mailto:mvl@ifs.ku.dk).

# 1 Introduction

The state of the economy - one's own or that of the nation - has long been considered among the most important predictors of support for incumbent politicians. This is generally considered desirable because it provides a shorthand for evaluating the performance of incumbent politicians and punish and reward them accordingly (Ashworth, 2012; Healy and Malhotra, 2013). While a simple idea at heart, the specifics of retrospective voting remain debated. In this paper, we focus on what we believe to be an understudied economic influence: local housing markets.

Housing markets saw a global boom followed by a bust in the period around the great recession. This had severe economic implications for well-being of both individual households and the overall state of the economy. Pairing the economic importance of the housing market with the fact that national housing and monetary policy to a considerable extent influenced the severity of the market crash makes housing markets a particularly useful mean for voters to evaluate the incumbent government by. Furthermore, housing markets are not a monolithic national phenomenon, but vary substantially across geographical contexts, thereby providing voters with relevant local information by which to assess incumbents.

In this paper, we assess the relationship between changes in the local housing market and support for the incumbent government in Denmark, using uniquely detailed and comprehensive data on housing sales at the local level. We do this using two complementary empirical approaches. First, we link detailed registry data on local housing prices to election results at the precinct level across four national elections, allowing us to study whether within-district differences in property values are related to support for parties in government. Second, to test the hypothesized causal mechanism that voters make inferences about government based on the state of their local housing market, we zoom in on individual voters' local contexts. Specifically, we link a two-period panel survey to precise measures of how individuals' neighborhoods –measured at very low levels of aggregation– were affected by changes in house prices.

We find the hypothesized positive relationship between local housing prices and support for governing parties at both the precinct-level and in the individual-level data. Specifically, a 50 pct. year-on-year increase in local housing prices, equivalent to the sharpest price increases during the housing boom, is associated with a 3 to 5 percentage points increase in the support for governing parties. In subsequent analyses, we probe the suggested role of local housing markets further by testing a number of observable implication arising from this conjecture. We find no evidence that housing prices affect the respondents ideological orientation, and no evidence that the effect of housing prices on incumbent support depends on whether you own your own home. Instead, our analyses suggest that the effect of housing prices is more pronounced among individuals who are more likely to be attuned to the state of their local housing market – in effect those have recently or who will soon be relocating. Taken together, these analyses seem to suggest that voters do not respond to changes in local housing prices because it changes their preferences for specific policy interventions or their own economic situation, but because of

what the the local housing market tells them about incumbents capacity to manage the economy in a way that benefits their community.

## **2 Relation to existing literature**

We are not the first to investigate, whether voters might draw inferences about policy outcomes from local economic conditions. A number of studies have examined the extent to which voters draw inferences about national economic conditions from local economic conditions (Books and Prysby, 1999; Reeves and Gimpel, 2012; Anderson and Roy, 2011; Ansolabehere et al., 2014; Bisgaard et al., 2016), and a number of studies have examined the extent to which voters draw inferences about whether to support incumbent politicians (Hansford and Gomez, 2015; Eisenberg and Ketcham, 2004; Kim et al., 2003; Healy and Lenz, 2014a). The results from these studies are somewhat mixed, but on balance they find that voters do make inferences based on local economic conditions; asserting that the national economy declining or that incumbent politicians are doing a bad job when local economic conditions are declining.

Our study distinguishes itself from these previous efforts by focusing specifically on the role of local housing markets, not just individual home ownership and the personal economic asset it constitutes, in shaping support for incumbents. Theoretically, we thus highlight how housing markets – in addition to concerns over personal finances already established in the literature – shape voting by providing locally derivable information about incumbent politicians’ capacity to manage the economy.

In doing so, our study ties into several neighboring literatures. First, a recently emerged strand of research in political economy highlighting the influence of home ownership – in itself or as part of a portfolio of economic assets – on redistribution and social policy preference as well as voting (Ansell, 2014; Nadeau et al., 2010; Stubager et al., 2013). Second, by conceptualizing housing bubbles as the result of government policy, our study also relates to the policy feedback literature (Campbell, 2012; Mettler and Soss, 2004; Pierson, 1993), which emphasizes how policies shape mass political behavior by providing incentives and conveying information to citizens.

At the methodological level, we contribute to the existing literature by exploiting uniquely detailed and comprehensive data on housing market transactions available in Danish public registries. Specifically, we can link highly detailed register data on local housing prices to both precinct-level panel data on national election outcomes as well as individual-level panel survey data. These data ameliorate three immanent methodological challenges confronting the broader class of studies scrutinizing local influences on political attitudes and behavior.

First, using extremely precise and highly local measures of house prices enables us to address the common problem of confounding of local context with local media market—a very different mechanism—typically arising in previous studies focusing on local economic conditions in highly aggregate geographical contexts (due to limited data availability) (Bisgaard et al., 2016).

Second, and related to the previous point, measures of local economic conditions are often based on samples which, while large enough to estimate precise national economic conditions, typically suffer from insufficient precision when estimating conditions at lower geographical levels (Healy and Lenz, 2014a).

Third, the panel set-up of data enables us to rule out time-invariant structural differences between local contexts as explanations of any observed relationship between local house prices and support for incumbents by using only within-precinct/individual variation in local housing prices (by means of fixed effects). This is particularly important given the strong urban-rural gradient in local property values, which would very likely confound any observed cross-sectional relationship with support for the sitting government.

While some previous studies do some of these methodological challenges, our study is to the best of our knowledge the first to address all of these shortcomings at once.

### **3 Understanding when local economic conditions matter**

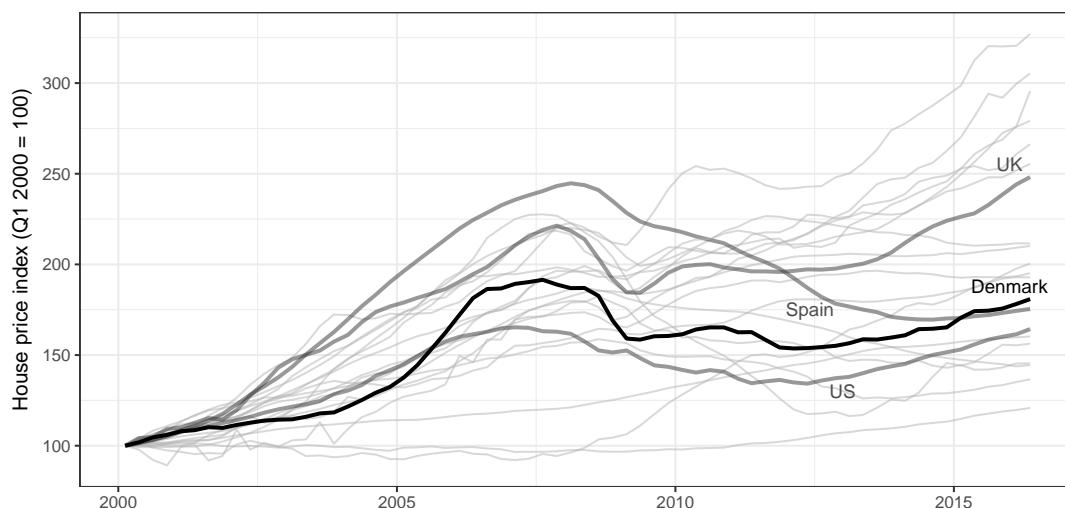
Here, we present a theory of *contextual priming*, emphasizing the conditional role...

### **4 Empirical setting: a policy-driven boom and bust**

The setting of our study is Denmark in the years surrounding the onset of the Great Recession. The precinct-level data (cf. Section 5) covers the election years of 2005, 2007, 2011, and 2015, whereas the individual-level data (cf. Section 6) covers panel survey responses from 2004, 2008, and 2011. Studying the relationship between changes in housing prices and support for the incumbent government in Denmark in this period of time is useful due to large temporal variations in these prices. The boom and bust of the Danish real-estate market before and during the great recession was very dramatic, even by international standards. Figure 1 shows the trajectory of Denmark's housing bubble compared with other international cases.

As shown in Figure 1, although many economies experienced large increases in real house prices, Denmark's housing bubble was exceptionally volatile, characterized by a late, rapid increase quickly succeeded by a crash. The bulk of Denmark's housing boom and bust occurred in just four years, from 2005 to 2009. In contrast, the housing bubble in the United States (shown in the light gray line in the left panel of Figure 1), though far bigger in absolute terms, was relatively protracted in comparison. As a consequence, local housing markets in Denmark saw year-to-year changes in housing prices that were, even by the standards of a globally economically volatile period, unusually large. This provides us with ample variation in the independent variable of interest.

Notably, Denmark's housing bubble was not merely a product of changes in the international business cycle. In fact, a majority of the housing bubble is typically attributed to national



**Figure 1:** Trends in real house prices in Denmark (black line) and selected countries, 2000-2016 (2000 level = 100). Based on the International House Price Database maintained by the Dallas Fed. The authors acknowledge use of the dataset described in Mack and Martínez-García (2011).

government policy. In 2002, the newly elected conservative government implemented a nominal freeze on property taxes, in effect cutting the real tax rate on property over time. The year after, the government introduced new loan types including deferred-amortisation loans which allowed homeowners to take out larger mortgage loans. In a study estimating the contribution of these domestic policies to the housing bubble, Dam et al. (2011, p. 62) conclude that “two thirds of the additional cyclical fluctuations that accompanied the housing bubble can be attributed to the deferred-amortisation loans and the nominal tax freeze”.

The role of national government policy in driving the housing bubble is important, since it means voters have a reason to view house prices changes as a relevant informational source when evaluating government performance. The government’s role in exacerbating the housing bubble was a politically salient issue in the aftermath of the Great Recession, so voters are likely to be aware of this link. However, although the policies exacerbating the housing bubble were implemented by the conservative government, which held office from 2001 to 2011, our argument does not cover only evaluations of the conservative government. If that were the case, evaluations of the government would be observationally indistinguishable from voters becoming more ideologically conservative, a plausible consequence of increases in housing wealth. In Section ??, we exploit the change in incumbency in 2011-2015 to show that housing price changes affect support for the incumbent government per se, not merely support for a conservative government.

## 5 Precinct-level evidence

We begin our exploration of the relationship between the state of local housing markets and incumbent support by looking at precinct-level election returns in Danish Parliamentary elections

between 2005 and 2015. In particular, we match electoral support for parties in government in these precincts with change in the price of all house sales sold in and around the precincts, examining the extent to which local housing prices and local electoral support for government parties go hand in hand.

## 5.1 Data sources and indicators

The key dependent variable in our study is *percent of votes cast for government parties* in each voting precinct. Each voting precinct corresponds to a single polling place and is this the smallest unit at which voting returns can be observed in Danish elections. We measure this for all precincts in four elections: 2005, 2007, 2011 and 2015. There are roughly 1,400 precincts, each precinct consisting of about 3,000 eligible voters on average and covering an average area of 30 square kilometers. A number of precincts are redistricted between each election. This is problematic, as we want to use the precincts as part of a panel data set. There are two ways to deal with this. We can drop precincts as their geographical boundaries get altered. This would mean dropping roughly 15 pct. of the data on the dependent variable. The other option is to fix the precincts geographical boundaries at one reference election (i.e. 2015), and then recalculate vote returns in any changed precincts, so they match up with precincts in the reference election. Since there are a lot of minor changes in geographical boundaries from election to election, and only few major changes, we opt for the latter, which allows us to keep these slightly altered districts in the analysis.<sup>1</sup>

The key independent variable is *change in local housing prices*. We obtain housing price data from The Danish Mortgage Banks' Federation (*Realkreditforeningen*), which publishes quarterly data on the average price per square meter of all sales at the zip code level.<sup>2</sup> For each election, we calculate change in housing prices as the percentage change in the price of houses sold in the quarter of the election compared to the same quarter one year before.

Zip codes are a substantively interesting level of aggregation when it comes to the price of housing, as it is the level at which house prices are most often reported in Denmark (cf. the fact they are published by The Danish Mortgage Banks' Federation). However, since the dependent variable is measured at the precinct level, merging these observations is not trivial. The easiest solution would be to extract the zip code of the address of each polling place and link the polling place to housing prices in that zip code. Unfortunately, full addresses are not available for all polling places. Instead, we use a three-stage approach to linking polling places to zip codes. First, we extract the street address and higher-level voting district of each polling place (the full resulting string is of the format 'Streetname streetnumber, City, Denmark'). Second, we pass this string to the Google Maps API, which geocodes the string and returns latitude-longitude

---

<sup>1</sup>For details of how returns from the redistricted precincts are calculated, see Søren Risbjerg Thomsen's research note at [bit.ly/20501Pi](http://bit.ly/20501Pi). We use 2015 as the reference election.

<sup>2</sup>Available at [statistik.realkreditforeningen.dk](http://statistik.realkreditforeningen.dk).

coordinates.<sup>3</sup> Third and last, we pass these coordinates to the Danish Addresses Web API (DAWA), a public service provided by the Danish Geodata Agency.<sup>4</sup> The DAWA returns the zip code for each address, allowing us to link polling places to zip codes.

We examine changes in prices rather than price levels. This is in part because previous economic voting literature, to the extent that it has looked at prices, have also focused on changes (i.e. inflation) rather than levels (cf. Kramer, 1971), and in part because it seems likely that changes in housing prices will be more salient for voters than levels. As such, changes in housing price will mean either very short or very long turnaround time, as sellers and buyers try to adjust to the new prices, leaving visible traces of these changes in the voters immediate context – such as the number of for sale signs, and the speed at which old neighbors are exchanged for new ones.

In addition to the main independent variable, we measure both the unemployment rate and median income at the zip-code level. We also measure the population density ( $\log(\text{inhabitants}/\text{km}^2)$ ) of the municipality in which the precinct is located. These are all population based measures calculated from national registers provided by Statistics Denmark.

## 5.2 The average effect of local housing prices

In table 1 we report estimates from a set of linear regression of electoral support for governing parties using changes in local housing prices as the primary independent variable. For all models we use robust standard errors clustered at the precinct-level. In the first column we present a simple linear regression between electoral support and changes in housing prices. In the second column we add year fixed effects, holding trends in incumbent support and rates of housing price changes constant. In column 3 we add precinct fixed effects. In effect, model 3 evaluates if differences in within-precinct changes in housing prices is related to changes in support. This setup hold averages rates of change constant, and thus effectively eliminate confounding by time-invariant circumstances at the precinct level that may lead to different trajectories in housing prices over time. In column 4 we we include the unemployment rate and median income as controls for the trend of the state of the economy in the precinct.

As can be seen from table 1, there is a statistically significant and positive coefficient attached to changes in housing prices, indicating that a larger fraction of the electorate casts their vote for governing parties in precincts where housing prices are increasing. In the most demanding specification the coefficient is 0.03, the implication being that if the price of housing sold in a precinct's zip-code in the last quarter before the election is twice that of the housing sold in the same quarter the year before, electoral support for governing parties in this precinct will increase with roughly 3 percentage points.

Unsurprisingly, the effect is larger in the models which use fewer controls – the effect

---

<sup>3</sup>Available at [developers.google.com/maps/documentation/geocoding/intro](https://developers.google.com/maps/documentation/geocoding/intro).

<sup>4</sup>Available at [dawa.aws.dk](https://dawa.aws.dk).

**Table 1:** Estimated effects of house prices on electoral support for governing parties.

	(1)	(2)	(3)	(4)
$\Delta$ housing price	0.104** (0.008)	0.048** (0.007)	0.053** (0.008)	0.030** (0.007)
Unemployment rate				-1.894** (0.221)
Log(Median income)				-0.888** (0.065)
Year FE		✓	✓	✓
Precinct FE			✓	✓
Observations	4196	4196	4196	4176
RMSE	8.398	6.746	5.711	5.325

Standard errors in parentheses

\*  $p < 0.05$ , \*\*  $p < 0.01$ 

size drops from 0.1 to 0.05 when introducing the economic controls, and drops an additional 0.02 when introducing the time and precinct fixed effects. This seems to suggest that using a difference-in-difference approach and detailed information about other aspects of the local economy is, in fact, important when identifying the effect of local housing prices on incumbent support.

**Table 2:** Assessing the Robustness of the Precinct-level Evidence

	(1)	(2)	(3)	(4)
$\Delta$ housing price (2 years)	0.129** (0.007)	0.035** (0.007)	0.040** (0.008)	0.021** (0.007)
$\Delta$ housing price (FD controls)	0.104** (0.008)	0.048** (0.007)	0.053** (0.008)	0.058** (0.008)
$\Delta$ housing price (FD DV)	0.037** (0.004)	0.006 (0.004)	0.020** (0.004)	0.019** (0.004)
$\Delta$ housing price (negative)	-0.081*** (0.022)	-0.054** (0.018)	-0.074*** (0.020)	-0.032 (0.019)
$\Delta$ housing price (positive)	0.116*** (0.012)	0.045*** (0.010)	0.043*** (0.012)	0.029* (0.011)
Year FE		✓	✓	✓
Precinct FE			✓	✓
Economic Controls				✓

Standard errors in parentheses. N between 3,051 and 4,193.

\*  $p < 0.05$ , \*\*  $p < 0.01$ 

How robust are these results? In table 2 we try to reanalyze the models above in different ways, to get a more complete picture of the statistical evidence for (or against) the importance of local housing markets for incumbent support.



We begin by looking at whether the chosen time period, i.e. year-over-year changes, is important. To do so we reestimate the models from table 1 using the change in housing prices over two years rather than one. The results are fairly similar using this measure of more long run changes in housing prices, however, the estimated effects tend to be smaller than what we found above. This fits nicely with previous work showing that voters are, by and large, myopic when it comes to relating economic indicators to incumbent support (Healy and Malhotra, 2009; Healy and Lenz, 2014b).

As mentioned above, we use changes in house prices rather than levels. However, in our models we control for the level of income and the level of unemployment. One could imagine, that this means that we fail to capture something important about how the economic status of the precinct is changing, which could, in turn, be driving our results. To examine whether this is the case, we re-estimate the different models using first-differenced (FD) controls. As can be seen in the fourth row of table 2, this does not change the results substantially, if anything, the estimated effects of local housing prices doubles in size. We also estimated a set of complete change models, using an FD dependent variable as well. The estimates from these models are reported in the fourth row of the table. The estimated effect size of housing prices in the completely differenced model is somewhat smaller than what was identified in table 1, but it remains statistically significant.

As a final robustness test we split the housing price variable in two, creating one variable which measures the size of positive changes, which is zero if there is a negative change, and one variable which measures the size of negative changes, which is zero if there is a positive change. This makes it possible to study the effect of increases and decreases in housing prices separately. We report the result of these analyses in the two last rows of table 2. Interestingly, the effect of negative changes and positive changes do not seem to differ - they are roughly 0.03. This is both important and somewhat surprising. Important, because it suggests that incumbent politicians are not only rewarded for the boom or punished for the bust. Instead, voters seem to first reward governing politicians when house prices are on the rise, and then punish them when they fall. Somewhat surprising, because much previous research have found that voters respond more strongly to negative economic conditions (e.g. Bloom and Price, 1975; Headrick and Lanoue, 1991; Soroka, 2014).

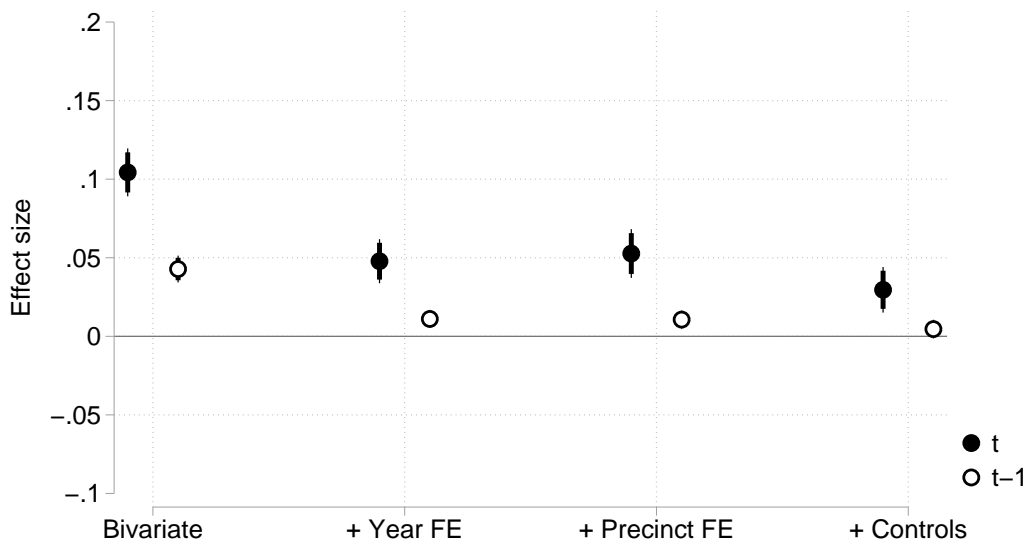
Taken together, these analyses suggest that there is a robust, positive effect of local housing prices on support for governing parties.

### **5.3 Local economic activity as moderator**

xxx

## 5.4 Placebo test

Next, we look at whether governing parties were already getting more popular in places where housing prices would eventually increase and getting less popular in places where housing prices would eventually decrease. To do this we estimate the same type of models as in table 1, using support for the governing party at the last election as the dependent variable – the lag of the dependent variable. We plot the estimated effects of housing prices on the lag of the dependent variable, as well as on the dependent variable, in figure 2. As can be seen from this figure there is a significant effect of housing prices on the lagged dependent variable in the less restrictive models, however, in the final model, the estimated effect of housing prices is 0.005 – less than a sixth of the estimate in the corresponding model in table 1 – and statistically insignificant. This is important, because a key assumption underlying the difference-in-difference design employed here is that prior trends in the dependent variable are uncorrelated with the independent variable (i.e. the parallel trends assumption). This analysis seems to suggest that there was no such correlation.



**Figure 2:** Effects of Housing Prices on support for governing party at the present election (t) and the last election (t-1) with 90 and 95 pct. Confidence Intervals

## 6 Individual-level evidence

We continue our study of how local housing markets shape incumbent support by tracking a representative sample of Danish citizens in a two wave panel survey collected between 2002 and 2011. We link the survey respondents to the prices of housing sold in their residential context using the national Danish registers. The registers contain very detailed information about all individuals legally residing in Denmark, including the exact geographical location of

their residence, the price of any real estate they sell, and a range of other socio-demographic characteristics (Thygesen et al., 2011). This makes it possible to calculate the distance between the individuals in the survey and all other individuals in Denmark and, in turn, the distance to any individuals who are selling their home.

While it is always desirable to try and replicate findings using a different methodology and a different set of data, linking individual level data to these detailed registers has some advantages over the precinct-level data used above. The flexibility and detail of the Danish registers makes it possible to look at multiple levels of aggregation – not just official levels of aggregation, such as zip codes. This makes it possible to eliminate concerns related to the modifiable area unit problem (MAUP), in that we can rule out that the findings are tied to a specific way of geographically aggregating housing prices. Further, and more important for our theoretical argument, we can also link housing prices to individual level variables such as attitudes or home ownership, and use these variables to rule out alternative explanations and explore individual-level moderators of the housing price effects.

## **6.1 Data sources and indicators**

Our independent variable is once again year-over-year changes in housing prices in the residential context of the respondent. We measure the change by comparing the price of housing sold in the quarter prior to the data collection and the price of housing sold in the same quarter a year earlier. Unlike for the precinct-level data we do not have data on prices per square meter. This makes the individual-level housing price change variable more sensitive to random variation in the types of housing put up for sale in the two time periods we compare. As such, some of the changes from year to year might be due to the fact that larger houses were put up for sale in one year. To take this, as well as other structural differences in the type of housing put up for sale, into account we divide the sales price of each unit of housing by its public valuation, before calculating the year-over-year change.<sup>5</sup>

We estimate the changes in housing prices within each survey respondent's residential context, measuring this context in three different ways. First, and similar to what we did for the precinct-level data, we use the respondents zip-code, comparing housing sold within the same zip code a year apart. Second, we look at the prices of the 20 or 40 units of housing sold closest to the respondents own home, comparing the prices of housing sold in the immediate proximity of the respondent to that of housing sold one year earlier. Third, we look at the price of housing sold within a fixed radius of 1000 or 1500 meters of the respondent. These latter ways of defining the respondents residential contexts have the benefit of being centered on the respondent, alleviating the problem that the context of a respondent living far from the centroid of one zip-code might be better represented by an adjoining zip-code. Note also that these latter

---

<sup>5</sup>The Danish government makes a conservative estimate of the price of all housing in Denmark every two years which is used to calculate property taxes. The public evaluation was constant across the time periods we use to estimate housing price changes.

two types of residential context differ in important ways – whereas the first method takes number of sales as fixed, but varies the geographical dispersion of these sales, the second method holds geographical dispersion fixed, but varies the number of sales. Since it is not obvious which of the three ways of measuring the states local housing market is preferable, we will use them all in the analysis below.<sup>6</sup>

To get at support for governing parties at the individual level we utilize a two-wave panel survey, constructed by re-interviewing respondents who had participated in the Danish Version of the European Social Survey (ESS); a nationally representative survey conducted regularly in most European countries. All in all 1,745 people were re-interviewed in the winter of 2011-12, with some of these having been interviewed for the first time in 2008/9, some in 2004/5 and some in 2002/3 – corresponding to rounds four, two and one of the ESS.

The respondents in the ESS in Denmark are randomly sampled from the national civil registry, and therefore the civil registration numbers were retained by the data collection agency. This made it possible to identify the respondents for a second interview, and made it possible to link the respondents to the national registers. From the survey, we use the following question: “What party did you vote for at the last parliamentary election?” Respondents were presented with all the parties which ran in the previous election. For the analyses we create a dummy variable indicating whether the respondent voted for a party in government at the time of the election.

In addition to these central variables, we also use a number of supporting variables in the analysis for statistical control, interaction analyses and placebo tests. As controls, we include unemployment and income both for the individual respondent and in the respondents immediate context. We present the remaining variables as we introduce them in the analysis.

## **6.2 The average effect of local housing prices**

In table 3 we report estimates from a set of linear probability models (LPM), setting the probability of voting for for a party in government as a function of changes in local housing prices. We estimate the models using a linear regression with fixed effects for the respondent, and fixed effect for which of the four different survey rounds the respondent is participating (ESS round one, two, four or the re-interview). All models include controls for the average income and unemployment rate in the respondents context, as well as indicators of the respondent’s own income and whether someone in the household is unemployed. As such, we end up with a difference-in-difference model which controls for trends in the economic situation – however, unlike for the precinct level data we can now control for trends in both the individuals personal

---

<sup>6</sup>To do this we use all housing sales registered in the national register EJSA, which do not fall into one or more of the following categories: (1) Sales of part of a house or apartment (10 pct. of all sales). (2) Sales of commercial real estate (9 pct). (3) Sales of apartments or houses valued at more than DKK 10 million (0.2 pct. of all sales) (4) Sales with what ‘Statistics Denmark’ calls an irregular price (i.e. if the sales price is more than three times the valuation or less than forty percent of the valuation, 6 pct. of all sales).

economy and for the economy of the larger context. We use robust standard errors, clustered at the individual level.

All models include the same set of variables, but they differ in how the contextual variables are operationalized. In column one we present a model where housing price change is calculated based on the 20 closest sales (cf. above), and the other contextual variables – average income and unemployment rate – is measured within a 500 meter radius of the respondent. In column two we use the 40 closest sales, but leaves the remaining variables operationalized as in column one. In column three and four we operationalize all contextual variables, sales, unemployment rate and average income, as 1000 and 1500 meter radii around the respondent. Finally, in column five, we examine sales at the level of zip-codes, but the other contextual variables are calculated based on people within a 1500 meter radii around the respondent.

**Table 3:** Linear Regression of Voting for Governing party

	20 Closest	40 Closest	1000 metres	1500 metres	Zip code
$\Delta$ housing prices	0.035 (0.036)	0.056 (0.044)	0.064 (0.052)	0.114* (0.051)	0.063 (0.056)
Unemployment rate	0.052 (0.290)	0.056 (0.289)	-0.439 (0.627)	0.755 (0.575)	0.796+ (0.422)
Average income	-0.004 (0.003)	-0.004 (0.003)	-0.005 (0.007)	-0.005 (0.007)	-0.006 (0.006)
Personal income	-0.000 (0.000)	-0.000 (0.000)	-0.000 (0.001)	-0.000 (0.001)	-0.000 (0.000)
Unemployed (household)	-0.032 (0.035)	-0.033 (0.035)	-0.066 (0.043)	-0.048 (0.040)	-0.034 (0.036)
Round FE	Yes	Yes	Yes	Yes	Yes
Individual FE	Yes	Yes	Yes	Yes	Yes
Observations	3479	3479	2790	2992	3384

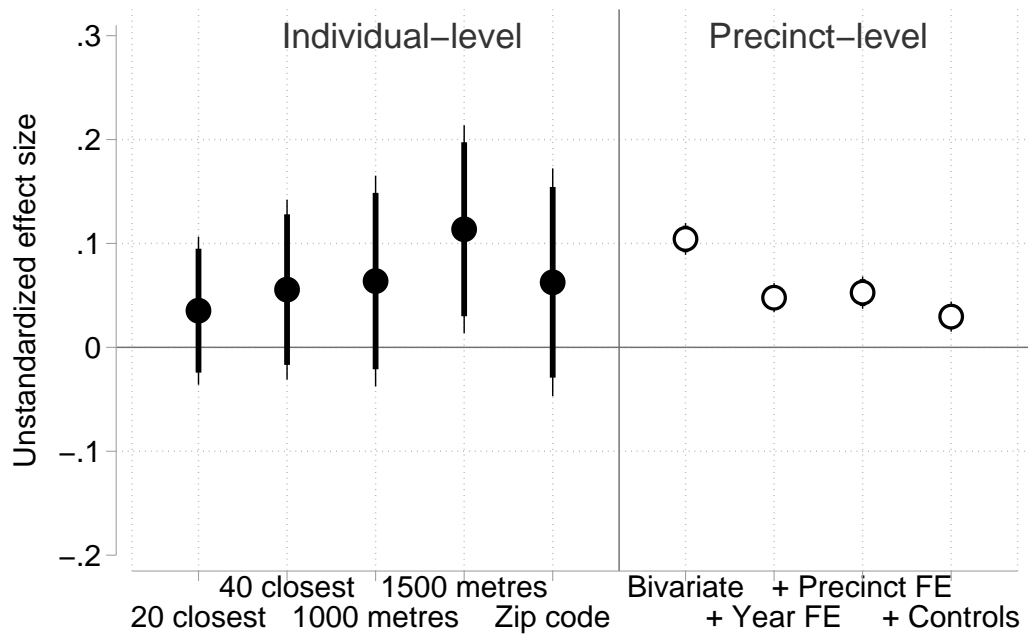
Standard errors in parentheses

+  $p < 0.1$ , \*  $p < 0.05$

The estimated coefficients are positive across the different models, although the size of the coefficient varies somewhat, going from 0.04 to 0.11. The effect is only statistically significantly different from zero in one of the five specification – the one which looks at the 1500 meter context.

One interpretation of these findings is that the lack of systematic statistically significant coefficients suggests that there is no effect of housing price changes. Such an interpretation fails to take into account, that the coefficients estimated for the individual-level data is actually consistent with what we found in the precinct-level data. To see this figure 3 plots the estimated effect of housing prices estimated for the individual-level data in table 3 and for the precinct-level data in table 1.

As can be seen from the figure, the effect sizes are pretty similar across levels of analysis



**Figure 3:** Effects of Housing Prices across levels of analysis with 90 and 95 pct. Confidence Intervals

- if anything they are larger for the individual level data. Put differently, a one reason that we cannot identify statistically significant effects in the individual level data is that that the housing price effects are not as precisely estimated. This interpretation, that the estimated coefficients do not represent a null-effect, but rather an imprecisely estimated effect, is further corroborated in the next section when we do find a statistically significant effect for a sub-group which should be especially attuned to housing prices.

### 6.3 Own economic activity as moderator

xxx

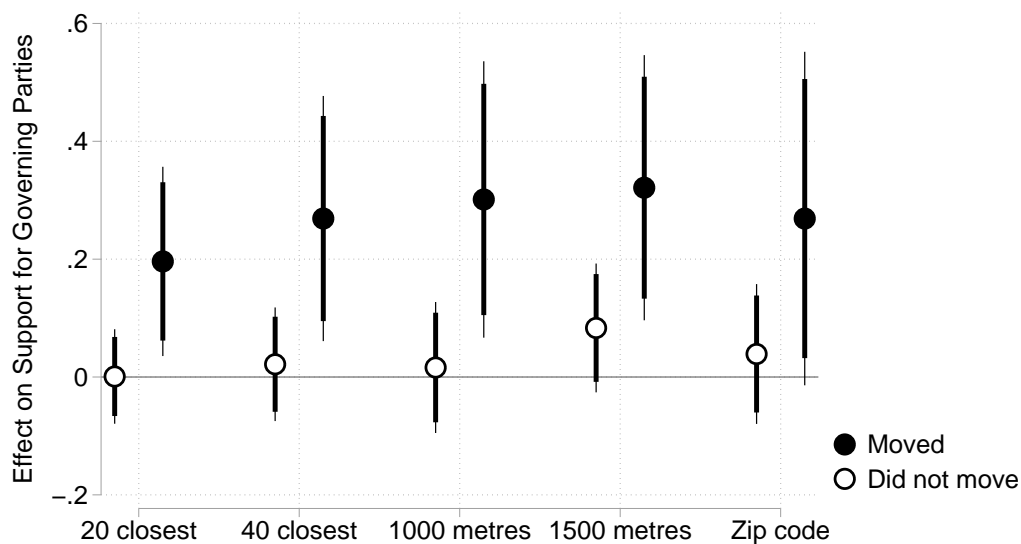
Why might people who do not own any housing be affected by changes in local housing prices? One reason, which we alluded to in the beginning of the paper, is that local housing markets serve as a signal of the incumbents' competence. As such, even though you do not own your home, you might infer from a booming local housing market, that incumbent politicians are doing a good job keeping your local community economically vibrant.

If voters are in fact using local housing markets as a signal of incumbent quality, we would expect those who are more finely attuned to this signal to be more affected by changes local housing prices.

To test this, we constructed a variable from the national registers, which tries to measure whether the respondent was likely to be attuned to the housing market. In particular, we measure whether the respondent moved within two years before or after being surveyed. To take into account that respondents who moved within one year of being surveyed were probably more

attuned than those who moved within two years, we gave respondents a score of one if they moved out the day after or before being surveyed, and then we let the score steadily decline until after two years it was zero (e.g. if you move exactly one year before or after being surveyed you had a score of 0.5). We re-estimate the individual-level models interacting this moving-variable with the housing price change variable.

In figure 4 we derive marginal effects from the different models for those who had not moved within two years (i.e. scores 0) and the effect for those who moved the day before or after answering survey (i.e. scores 1). The estimated effect of housing prices is very large for those respondents who are on the cusp of moving, and, more importantly, is statistically significant in all specifications ( $p < .05$  for all models except the zip-code model,  $p < .1$  for the zip-code model). The marginal effects for the movers is also significantly larger than the effects for the stayers ( $p < 0.1$ ) in four out of the five specifications.



**Figure 4:** Effects of Changes in Housing Prices for those who had just or were going to move and those who did not with 90 and 95 pct. Confidence Intervals

Taken together, these analyses suggest that the housing price effect is not related to ideology or ‘simple’ self-interest. Instead, to the extent that voters are attuned to local housing markets, changes in local housing prices seems to convey a signal to voters about the incumbent’s competence in handling the local economy.

## 7 Conclusion

The price of housing tells you something fundamental about the state of the economy in a community. Just like unemployment or local economic growth, housing prices shape the experience and the fate of a community. Therefore housing prices might play an important

role in politics. In this article we wanted to examine one possible political effect of changes in local housing prices – that on support for incumbents parties. Using precinct-level data on four Danish Parliamentary elections bookended by a dramatic bubble in real-estate prices, we found a positive effect of changes in housing prices on electoral support. Our results suggest that as housing prices increase, so does electoral support for governing parties. Linking a two-wave panel survey of Danish voters to the national Danish registers, we replicated this finding, identifying a comparable effect of housing prices on incumbent support. Analyzing the panel data in more detail, we found that the effect of housing prices was especially pronounced among those who were more likely to be attuned to the local housing market.

Though the data used in this study is a clear improvement compared to those in earlier studies, it is nonetheless observational. In the absence of fully or quasi-experimental variation in housing prices, we cannot be sure that the estimated effects are not confounded by unobserved heterogeneity. This concern remains even though we apply highly stringent tests to the effect estimate. Hence, a promising avenue for future research is to identify settings with plausibly exogenous variation (Jerzak and Libgober, 2016, cf.).

What implications do these findings have? First, politicians should care about housing prices and the policies that influence them. If not they risk facing electoral retribution. Further, since voters are sensitive to local differences in housing prices, politicians cannot simply be attentive to national housing prices, but have to worry about the geographic distribution of any housing booms and busts (cf. Ferejohn, 1986, 11). This aspect, that voters care about local economic conditions, is especially interesting in light of the fact that most studies of the electoral effects of the economy have focused on the national economy or, to a lesser extent, personal economic conditions.



## References

- Anderson, C. D. and Roy, J. (2011). Local economies and national economic evaluations. *Electoral Studies*, 30(4):795–803.
- Ansell, B. (2014). The political economy of ownership: Housing markets and the welfare state. *American Political Science Review*, 108(02):383–402.
- Ansolabehere, S., Meredith, M., and Snowberg, E. (2014). Meco-economic voting: Local information and micro-perceptions of the macro-economy. *Economics & Politics*, 26(3):380–410.
- Ashworth, S. (2012). Electoral accountability: recent theoretical and empirical work. *Annual Review of Political Science*, 15:183–201.
- Bisgaard, M., Dinesen, P. T., and Sønderskov, K. M. (2016). Reconsidering the neighborhood effect: Does exposure to residential unemployment influence voters' perceptions of the national economy? *Journal of Politics*.
- Bloom, H. S. and Price, H. D. (1975). Voter response to short-run economic conditions: The asymmetric effect of prosperity and recession. *American Political Science Review*, 69(04):1240–1254.
- Books, J. and Prysby, C. (1999). Contextual effects on retrospective economic evaluations the impact of the state and local economy. *Political Behavior*, 21(1):1–16.
- Campbell, A. L. (2012). Policy makes mass politics. *Annual Review of Political Science*, 15:333–351.
- Dam, N. A., Hvolbøl, T. S., Pedersen, E. H., and Birch, P. (2011). The housing bubble that burst: Can house prices be explained? and can their fluctuations be dampened? *Danmarks Nationalbank Monetary Review 1st Quarter Part*.
- Eisenberg, D. and Ketcham, J. (2004). Economic voting in us presidential elections: Who blames whom for what. *Topics in Economic Analysis & Policy*, 4(1).
- Ferejohn, J. (1986). Incumbent performance and electoral control. *Public choice*, 50(1):5–25.
- Hansford, T. G. and Gomez, B. T. (2015). Reevaluating the sociotropic economic voting hypothesis. *Electoral Studies*, 39:15–25.
- Headrick, B. and Lanoue, D. J. (1991). Attention, asymmetry, and government popularity in britain. *The Western Political Quarterly*, pages 67–86.
- Healy, A. and Lenz, G. S. (2014a). Presidential voting and the local economy.
- Healy, A. and Lenz, G. S. (2014b). Substituting the end for the whole: Why voters respond primarily to the election-year economy. *American Journal of Political Science*, 58(1):31–47.
- Healy, A. and Malhotra, N. (2009). Myopic voters and natural disaster policy. *American Political Science Review*, 103(03):387–406.
- Healy, A. and Malhotra, N. (2013). Retrospective voting reconsidered. *Annual Review of Political Science*, 16:285–306.

- Jerzak, C. T. and Libgober, B. D. (2016). Property values & political preferences: Evidence from the adoption of e-zpass. *Available at SSRN 2780539*.
- Kim, J., Elliott, E., and Wang, D.-M. (2003). A spatial analysis of county-level outcomes in us presidential elections: 1988–2000. *Electoral Studies*, 22(4):741–761.
- Kramer, G. H. (1971). Short-term fluctuations in us voting behavior, 1896–1964. *American political science review*, 65(01):131–143.
- Mettler, S. and Soss, J. (2004). The consequences of public policy for democratic citizenship: Bridging policy studies and mass politics. *Perspectives on politics*, 2(01):55–73.
- Nadeau, R., Foucault, M., and Lewis-Beck, M. S. (2010). Patrimonial economic voting: Legislative elections in france. *West European Politics*, 33(6):1261–1277.
- Pierson, P. (1993). When effect becomes cause: Policy feedback and political change. *World politics*, 45(04):595–628.
- Reeves, A. and Gimpel, J. G. (2012). Ecologies of unease: Geographic context and national economic evaluations. *Political Behavior*, 34(3):507–534.
- Soroka, S. N. (2014). *Negativity in democratic politics: Causes and consequences*. Cambridge University Press.
- Stubager, R., Lewis-Beck, M. S., and Nadeau, R. (2013). Reaching for profit in the welfare state: Patrimonial economic voting in denmark. *Electoral Studies*, 32(3):438–444.
- Thygesen, L. C., Daasnes, C., Thaulow, I., and Brønnum-Hansen, H. (2011). Introduction to danish (nationwide) registers on health and social issues: structure, access, legislation, and archiving. *Scandinavian Journal of Public Health*, 39(7 suppl):12–16.